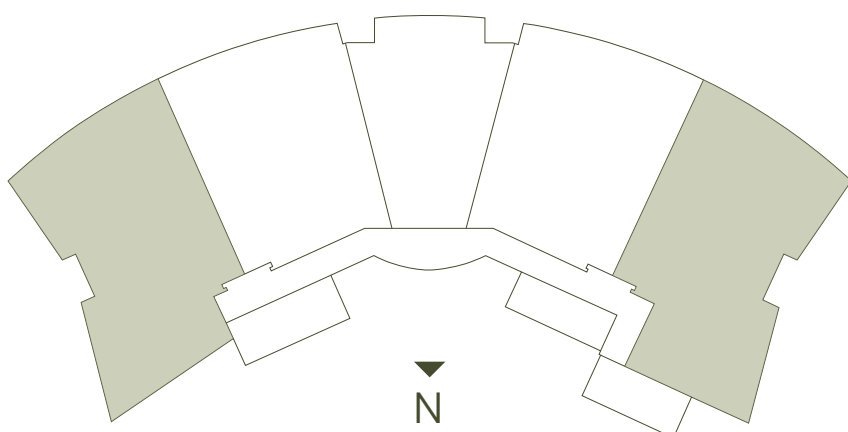
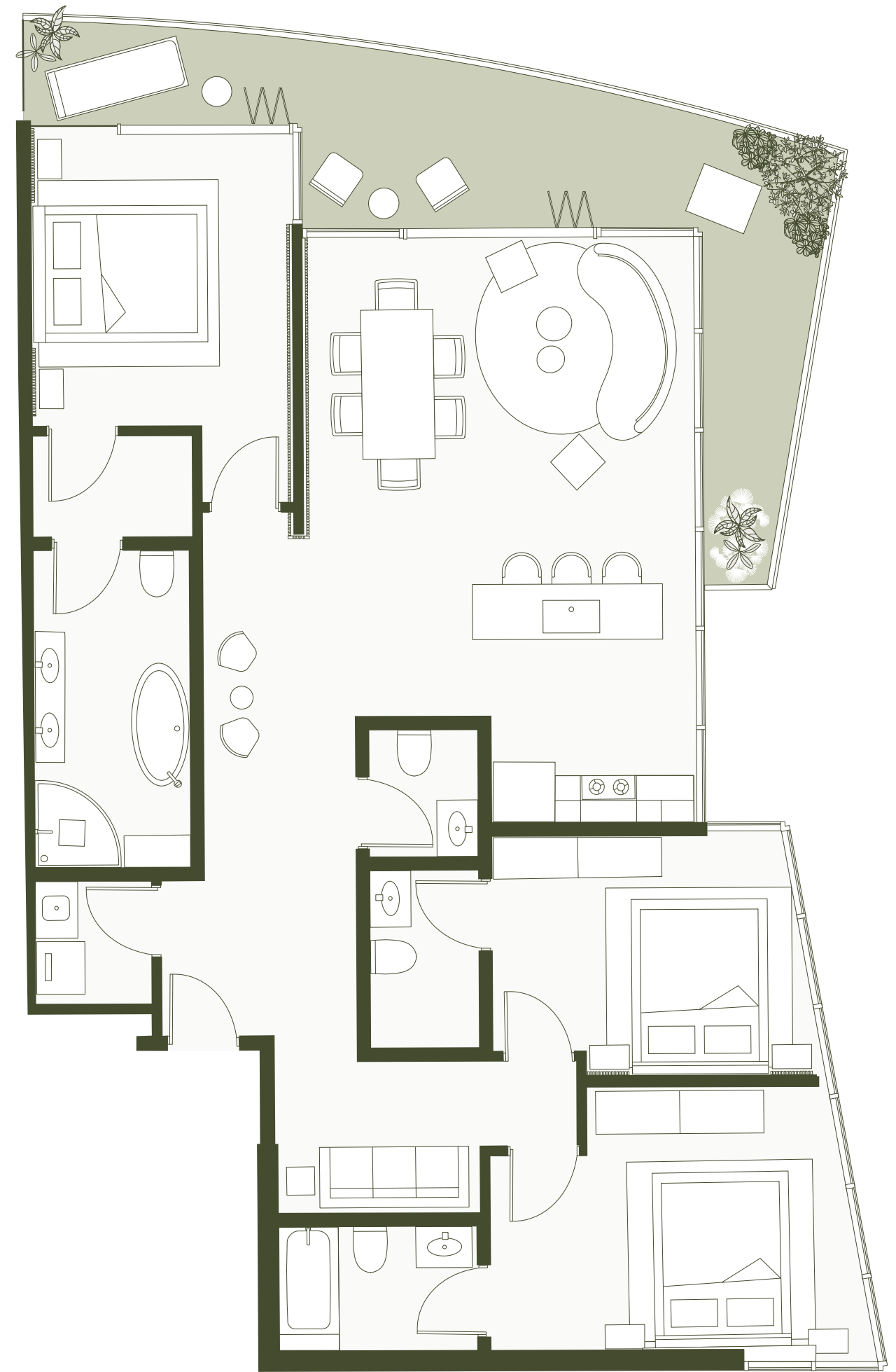


# Three-Bedroom


3 BEDROOMS — 3.5 BATHS — TERRACE

TOTAL 2,230 Sq Ft



*Islas*  
of MANUEL ANTONIO

**EDG**  
Elevated  
Development  
Group

 STATED SQUARE FOOTAGES INCLUDE PRIVATE PARKING SPACE(S) AND INDEPENDENT OWNER STORAGE SPACE. DIMENSIONS ARE MEASURED TO THE EXTERIOR BOUNDARIES OF THE EXTERIOR WALLS AND THE CENTERLINE OF INTERIOR DEMISING WALLS. MEASUREMENTS OF ROOMS SET FORTH ON THIS FLOOR PLAN ARE GENERALLY TAKEN AT THE FARTHEST POINTS OF EACH GIVEN ROOM (AS IF THE ROOM WERE A PERFECT RECTANGLE), WITHOUT REGARD FOR ANY CUTOUTS OR VARIATIONS. ALL DIMENSIONS ARE ESTIMATES WHICH WILL VARY WITH ACTUAL CONSTRUCTION, AND ALL FLOOR PLANS, SPECIFICATIONS AND OTHER DEVELOPMENT PLANS ARE SUBJECT TO CHANGE AND WILL NOT NECESSARILY ACCURATELY REFLECT THE FINAL PLANS AND SPECIFICATIONS FOR THE DEVELOPMENT. SALES PRICES INCLUDE BEACH CLUB MEMBERSHIP.